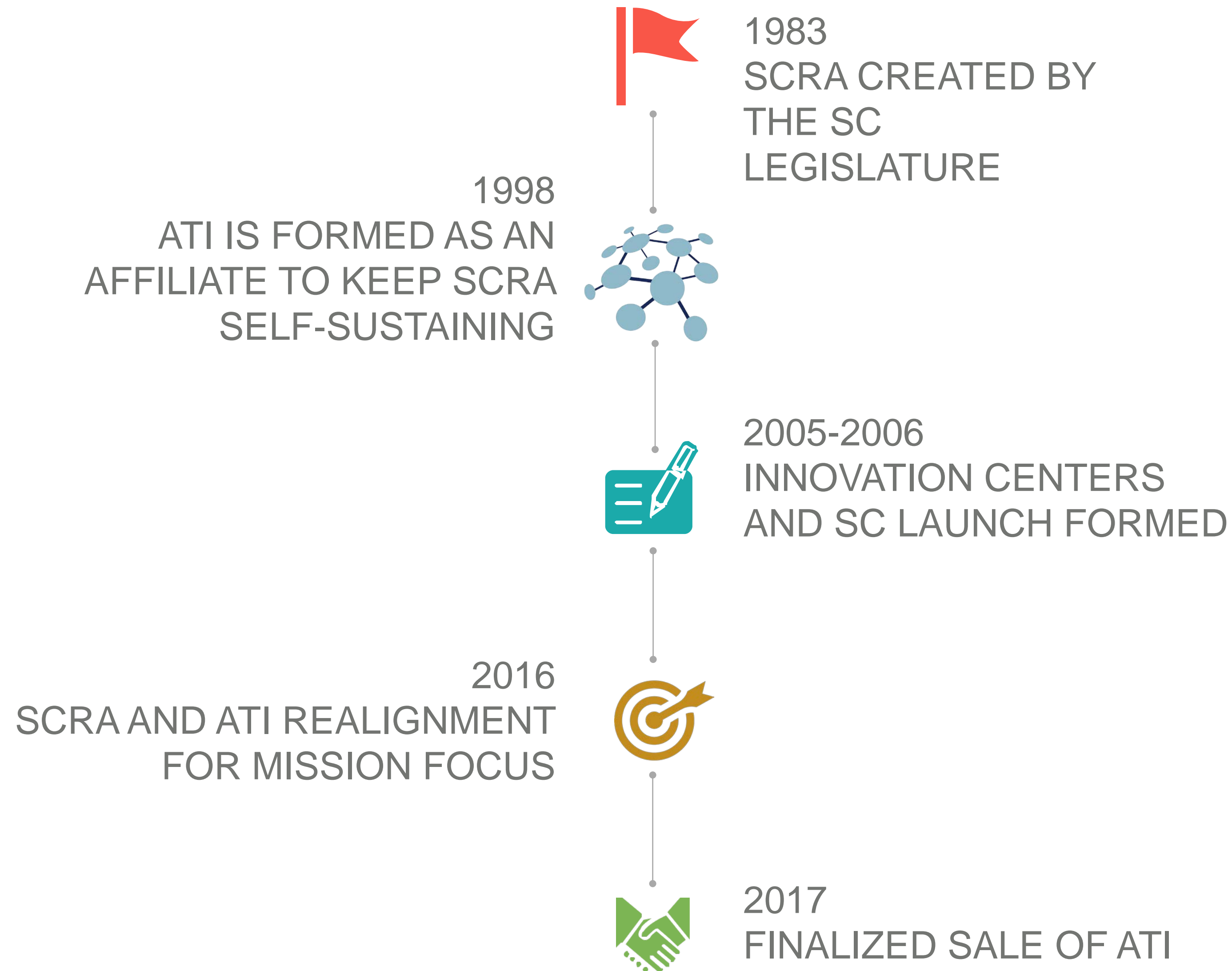






ABOUT US

OUR HISTORY

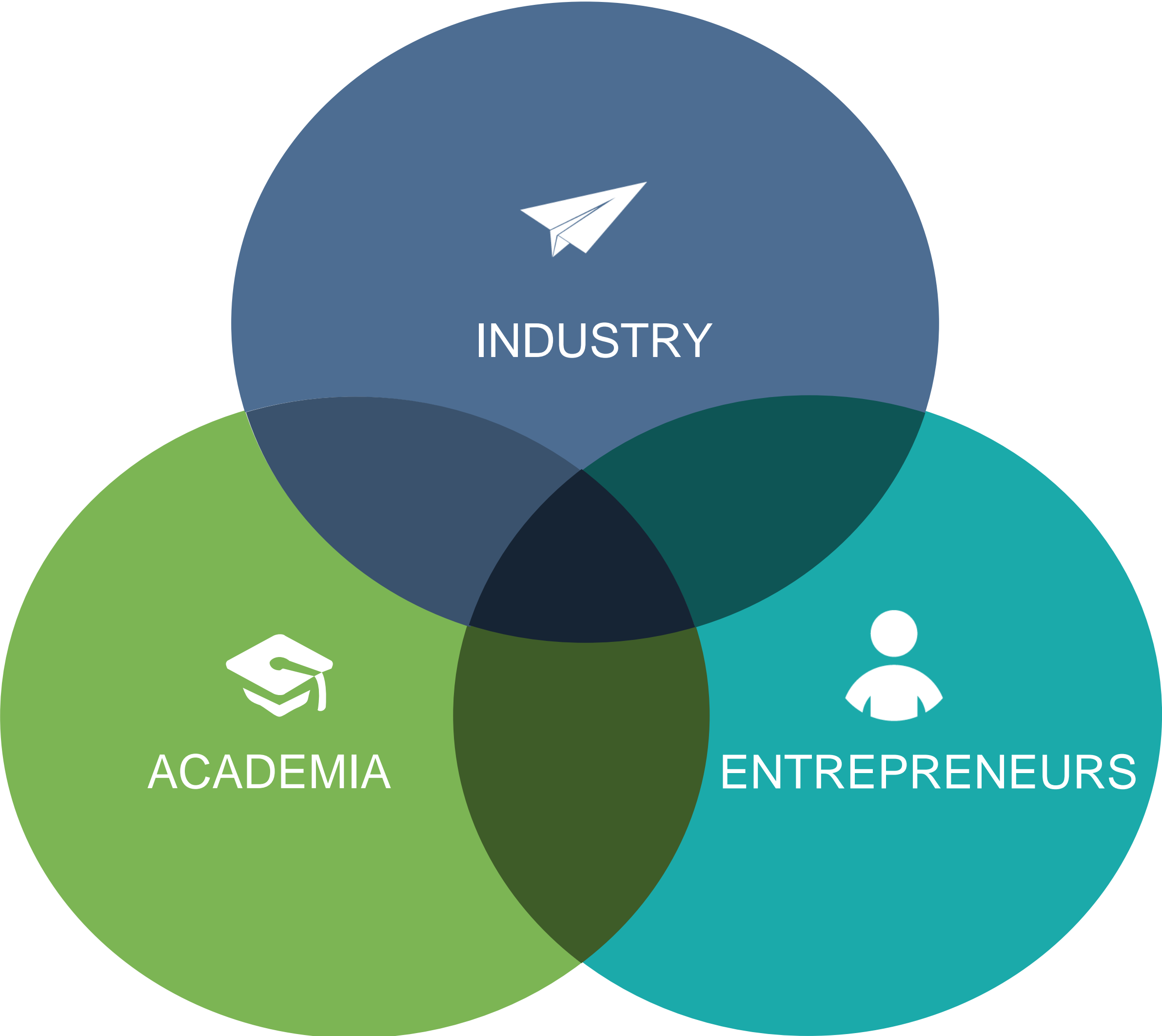




SCRA Fosters South Carolina's Innovation Economy

We support entrepreneurs, enable academic research and its commercialization, and connect industry to innovators.

CLIENT COMMUNITIES





ENTREPRENEURS

HOW WE HELP: SC LAUNCH PROGRAM



- ✓ Provide mentoring, grants, investments and other funding to early-stage technology companies

- ✓ Funding for the program comes from contributions to the Industry Partnership Fund

- ✓ Companies must reside in South Carolina

- ✓ Companies are closely aligned with the following industries: Advanced Materials/Manufacturing, Information Technology and Life Sciences

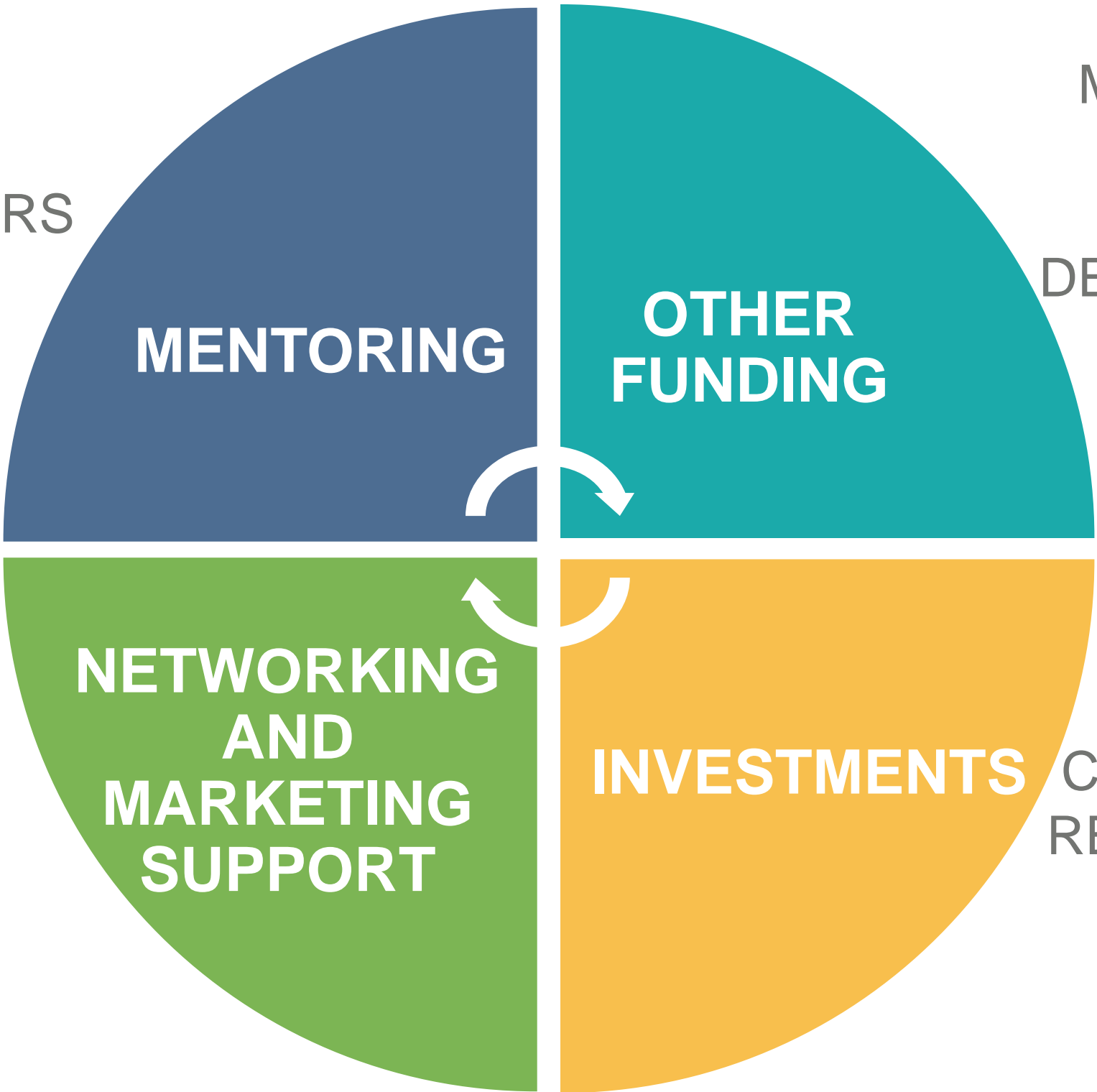
TYPES OF SUPPORT



MENTORING AND
SUPPORT FROM SC
LAUNCH TEAM AND
RESOURCE PARTNERS



RESOURCE
PARTNERS,
NETWORKING
EVENTS AND
MARKETING
SUPPORT



SBIR/STTR
MATCHES, ASAP
GRANTS,
PROJECT
DEMONSTRATION
FUNDS AND
RELOCATION
ASSISTANCE



AFTER DUE
DILIGENCE,
COMPANIES MAY
RECEIVE BOARD-
APPROVED
LOANS



TYPES OF GRANTS



**SBIR/
STTR**

SBIR/STTR Phase I Matching Grant
Up to \$50,000

Each company is limited to two SBIR Matching Grants in the company's lifetime.

PDF

Project Development Fund
\$15,000

Each company can receive up to \$25,000 during its lifetime.

ASAP

Academic Startup Assistance Program
\$15,000

Each company can receive up to \$25,000 during its lifetime.

NEW!

Acceleration Grant – Pilot Program
\$50,000

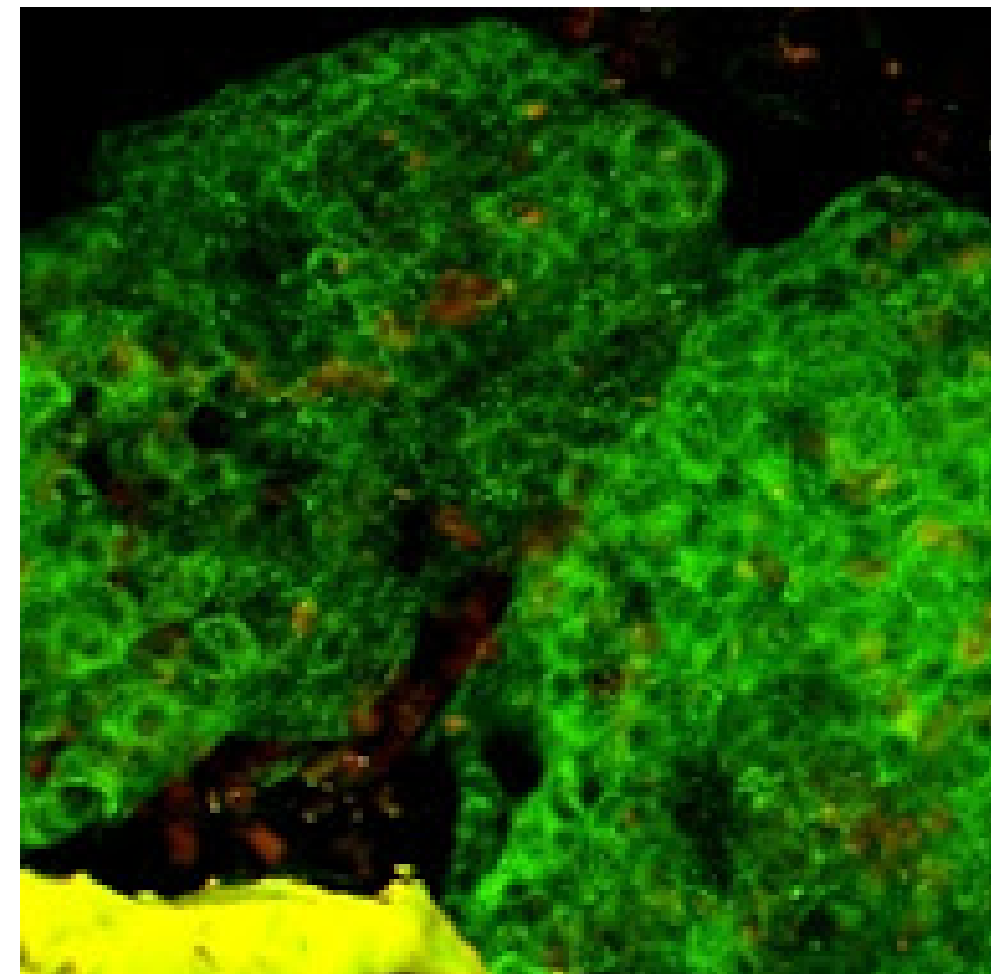
Each company is eligible for one grant during its lifetime.

CASE STUDY: KIYATEC



“SC Launch helped me form and grow a life-science company based on university research.”

*Matt Gevaert,
KIYATEC, Inc. CEO*



SC Launch made an early investment in Kiyatec and followed with three additional rounds of funding to advance commercialization.



BY THE NUMBERS



2,092

CURRENT DIRECT &
INDIRECT JOBS CREATED
BY SC LAUNCH
COMPANIES

\$594
Million

FOLLOW-ON FUNDING
RECEIVED BY SC
LAUNCH COMPANIES

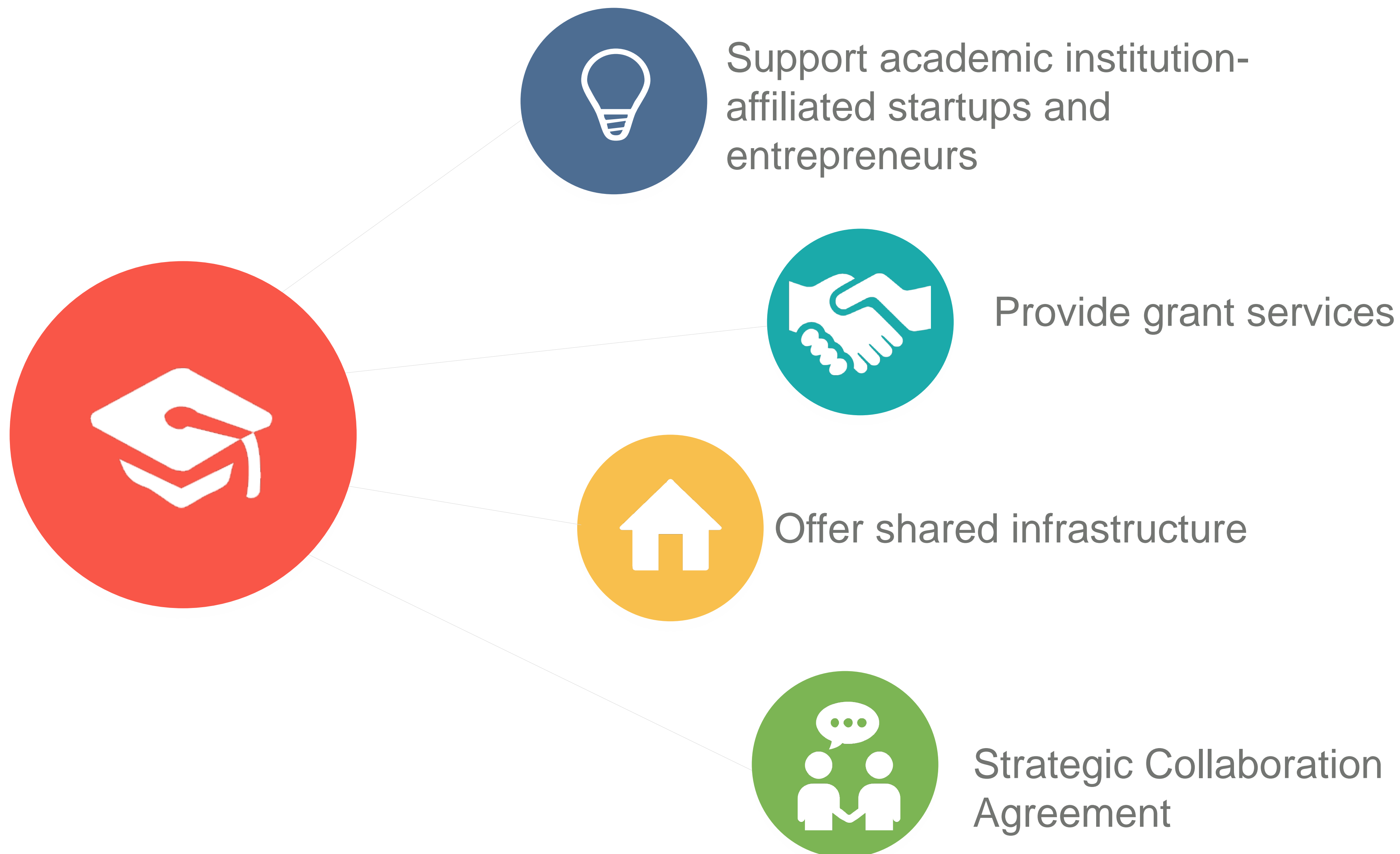
\$61,870

AVERAGE SALARY OF
JOBS CREATED BY SC
LAUNCH COMPANIES



ACADEMIA

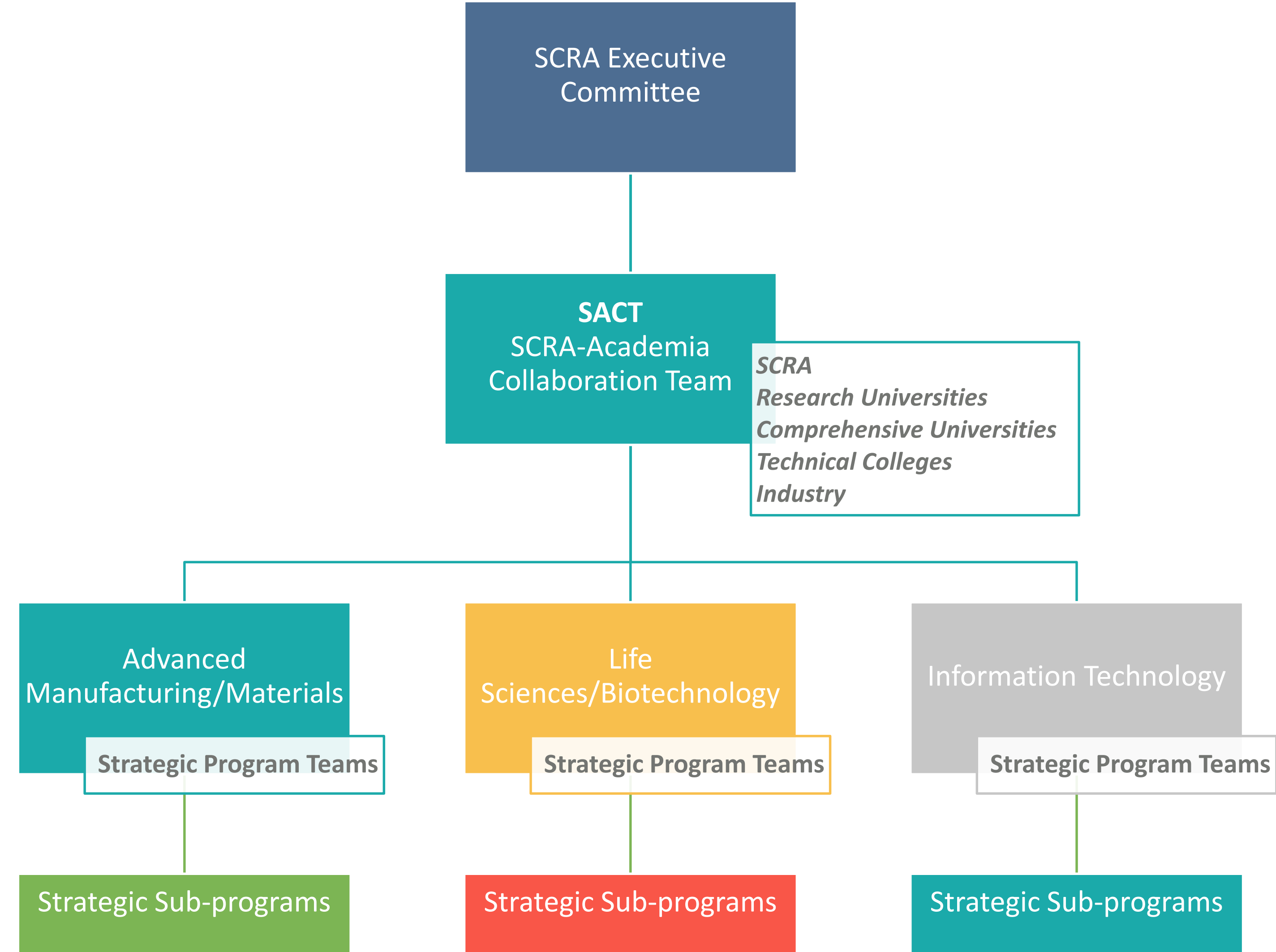
ACADEMIA SUPPORT



COLLABORATION WITH ACADEMIA



The Strategic Collaboration Agreement outlines purpose, scope, participants, resourcing, timelines and governance.



SCRA-ACADEMIA COLLABORATION TEAM (SACT)



Mission

- Coordinate research projects effectively and efficiently by maintaining inventories of applicable academic programs, resources and facilities throughout the state's universities and colleges
- Communicate with industry representatives to identify research needs
- Monitor market trends to discover areas of growth and innovation

Vision

- The SACT will generate economic growth and create employment opportunities throughout the State of South Carolina by coordinating applied, collaborative research activities. Working with representatives from academia and industry, the SACT will sponsor research projects within three areas of specialization:
 - Advanced Manufacturing / Materials
 - Life Sciences / Biotechnology
 - Information Technology

A dark blue chevron-shaped graphic pointing to the right, containing the word 'Approach' in white text.

Approach

- In selecting individual research projects, the SACT will give preference to those that can be completed with available resources and within a reasonable timeframe, and that:
 1. Address specific industry needs
 2. Allow for broad participation from academia
 3. Demonstrate a potential to create jobs within South Carolina and attract new industry and investment to the state
 4. Foster opportunities for workforce development
- For each research project, the SACT will develop specific, measurable goals, which will be used to assess the team's effectiveness

NEAR-TERM SACT ACTIVITIES



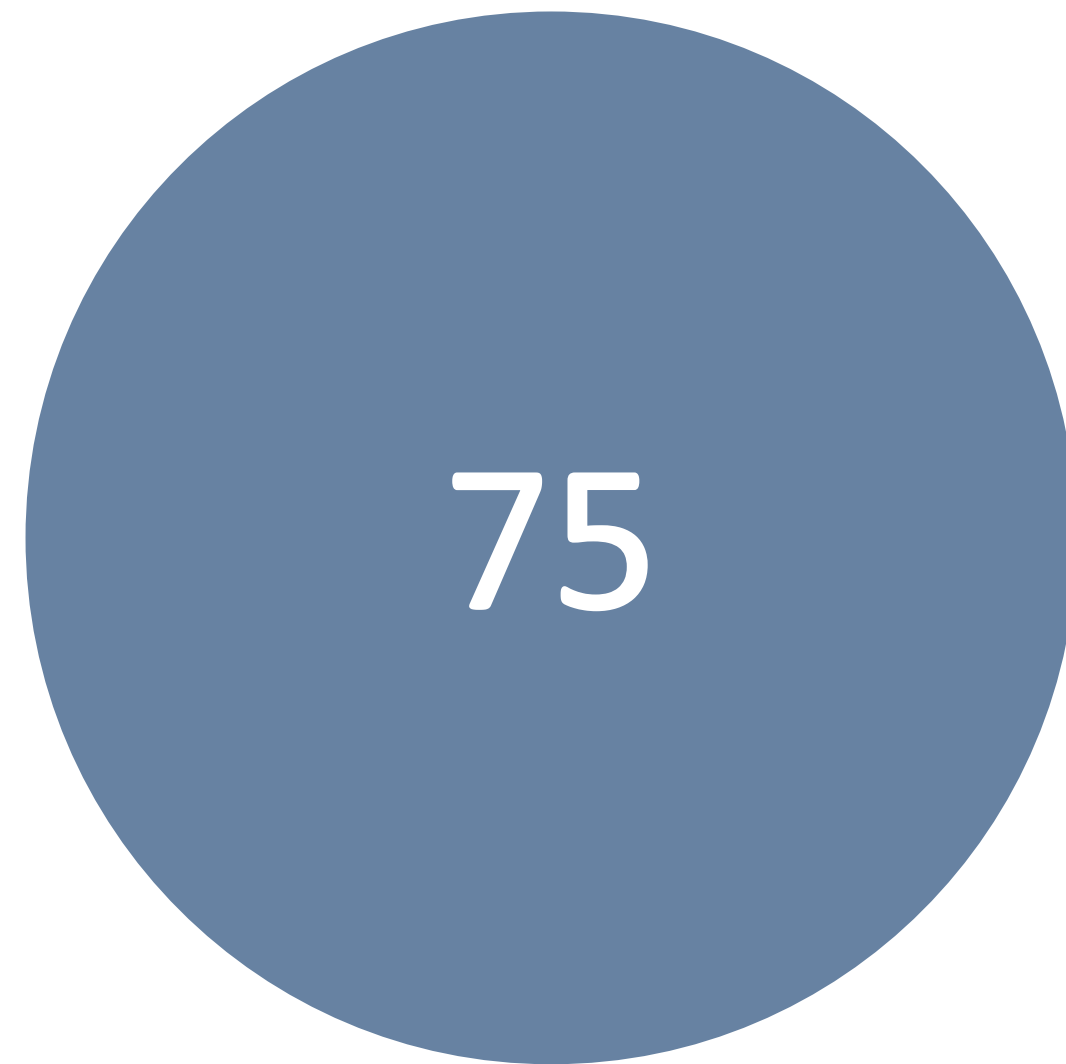
1. Pilot test the concept with 2 high-potential areas immediately

- Identify 2 high-potential subprograms to facilitate
- Demonstrate proof of concept by creating 2 “success” pilots by way of the collaboration (i.e., new partners, access to capital, other benefits) over the coming 9 months
- Learn how best to plug into existing collaborations
- Build strategies to make SC a center of excellence

2. Full Program Build out over the next 12 months

- Develop a full inventory of existing programs and strengths across academia and industry
- Conduct market-back assessments of the strategic program areas to identify needs and opportunities
- Develop strategies, criteria and success metrics
- Select programs
- Formalize 1-2 additional subprograms to drive during CY 2018 and beyond

BY THE NUMBERS: ACADEMIA SUPPORT



NUMBER OF ACADEMIC
INSTITUTION-AFFILIATED
COMPANIES SUPPORTED



ACADEMIC INSTITUTION-
AFFILIATED COMPANIES
RECEIVING GRANTS



ACADEMIC INSTITUTION-
AFFILIATED COMPANIES
RECEIVING
INVESTMENTS



INDUSTRY

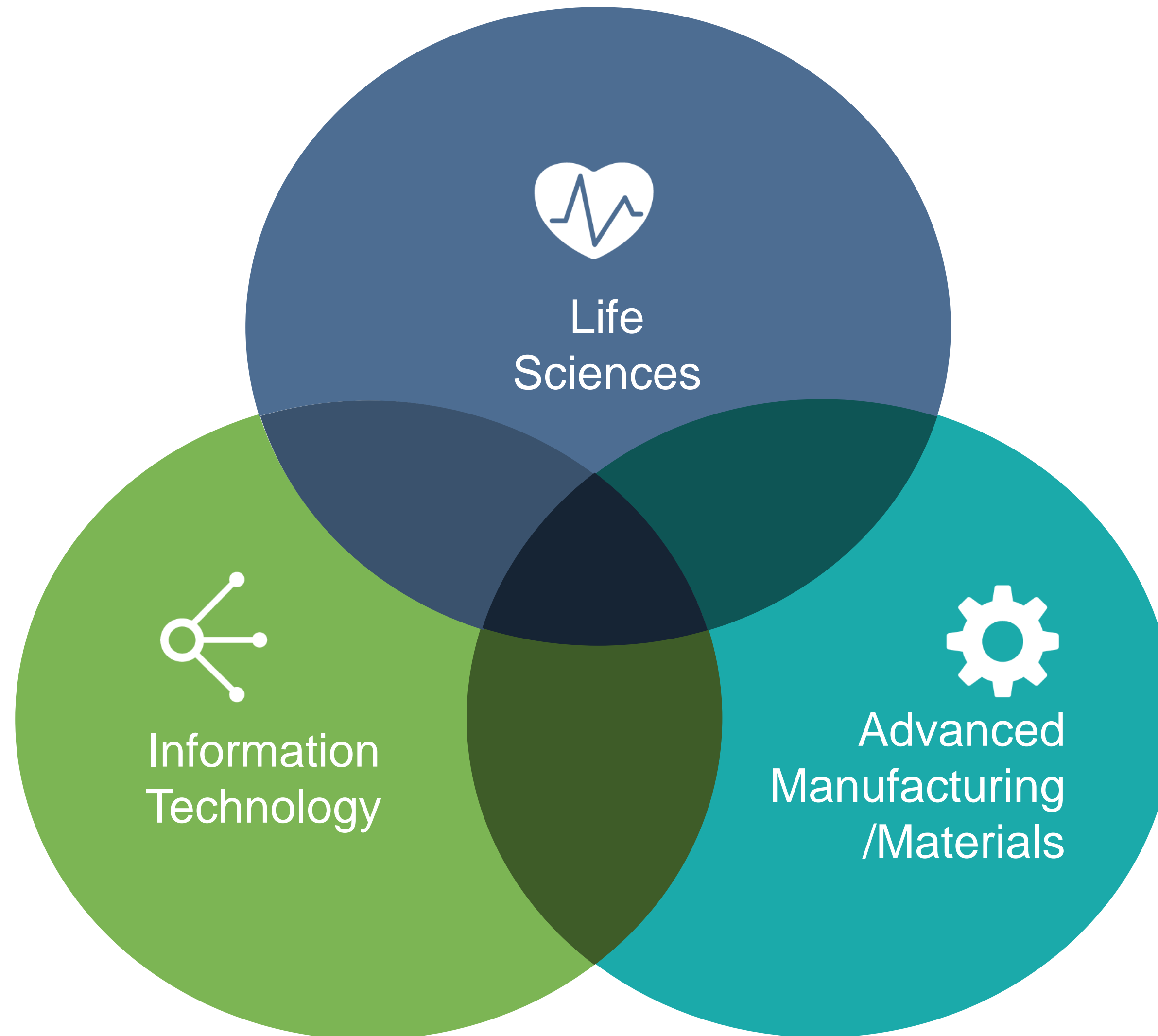
CONNECTING INDUSTRY TO INNOVATORS



SCRA partners with economic development organizations in the state that share our mission to build South Carolina's technology-driven economy.

SCRA creates connections among industry, academia and entrepreneurs to foster company growth and increase the state's research capacity.

INDUSTRIES OF FOCUS



CASE STUDY: THE MCNAIR CENTER



SCRA provided financial support and up-fits to help USC kick-start the initiative, which grows the innovation economy through aerospace research and innovation.



The McNair Center is housed in the USC Innovation Center, which provides space for high-tech manufacturing and collaboration.



BY THE NUMBERS: COMPANY RELOCATION



18

COMPANIES RELOCATED
TO SOUTH CAROLINA

2

INTERNATIONAL
COMPANIES RELOCATED
TO THE STATE

2

COMPANIES WITH
OFFICES OR
HEADQUARTERS IN SCRA
FACILITIES



FACILITIES

SCRA INNOVATION CENTERS AND FACILITIES



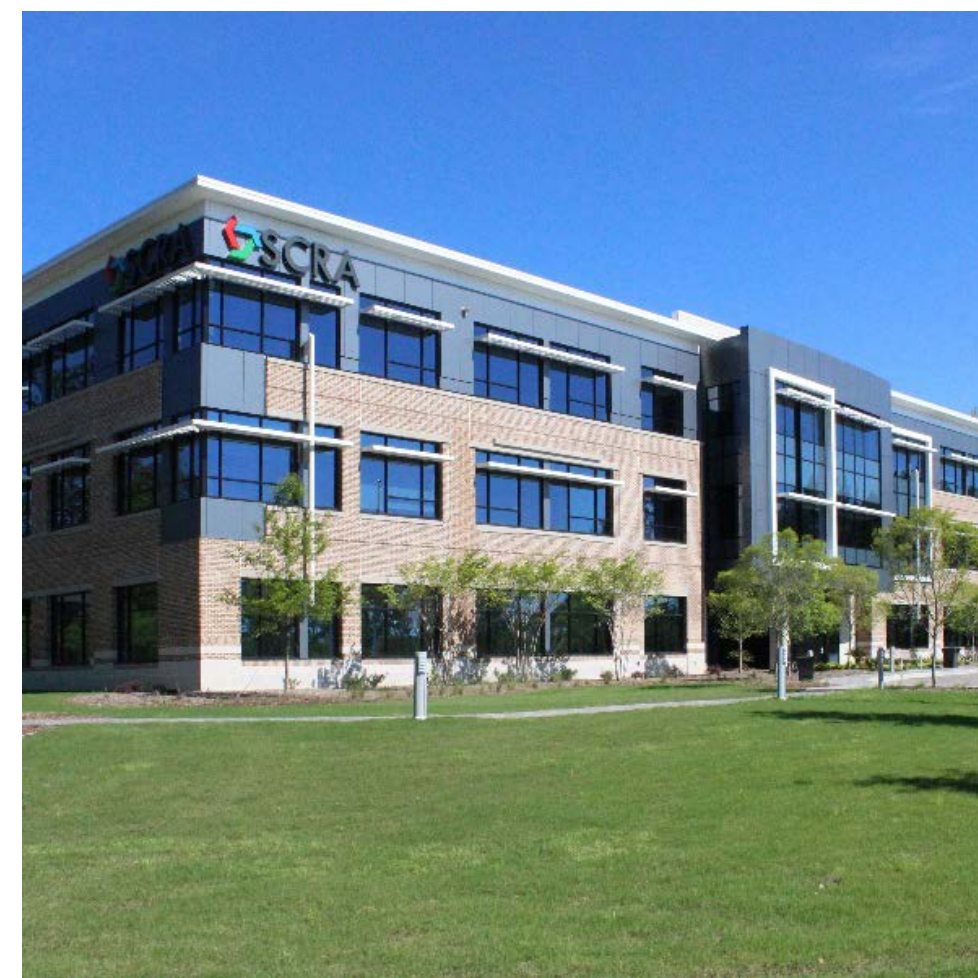
MUSC INNOVATION
CENTER
—
Charleston, SC



DUKE ENERGY
INNOVATION
CENTER
—
Anderson, SC



USC INNOVATION
CENTER
—
Columbia, SC



APPLIED
TECHNOLOGIES
CENTER
—
Summerville, SC

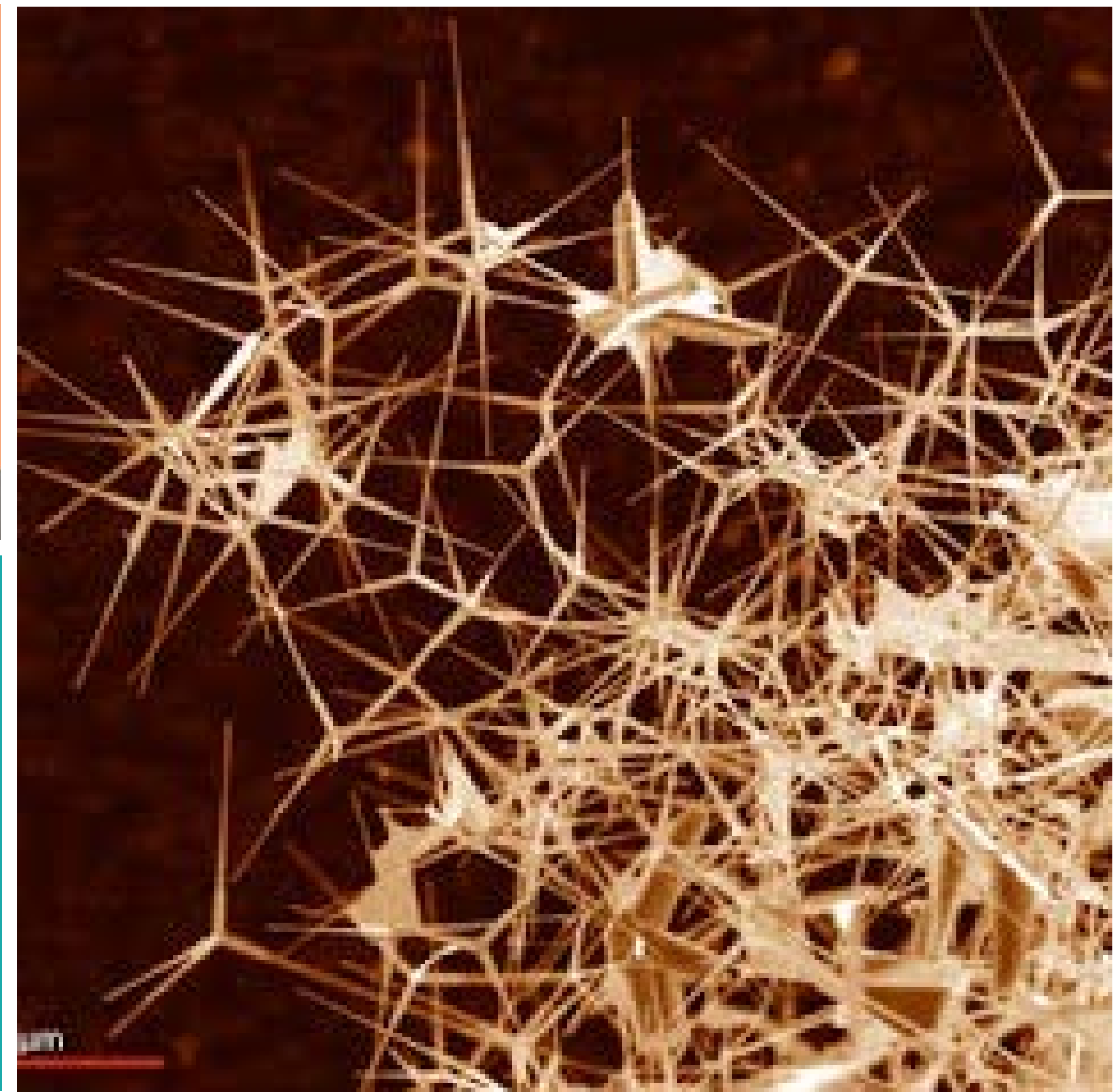
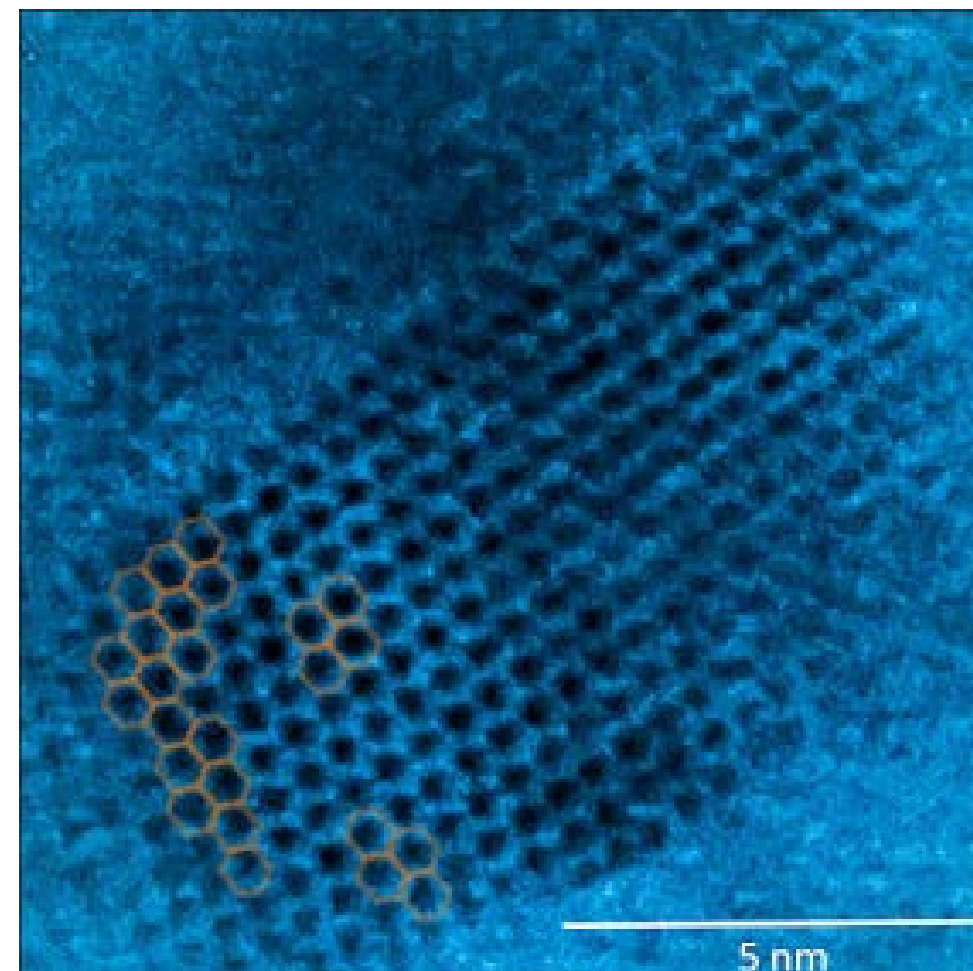
CASE STUDY: CLEMSON NANOMATERIALS CENTER



SCRA quickly provided a specialized lab with all the equipment required to conduct federally-funded nanotech research.



This project highlights SCRA's commitment to furthering academic research and commercialization.



CASE STUDY: WATT FAMILY INNOVATION CENTER



SCRA is a founding partner of Clemson's Watt Family Innovation Center. We're providing support for cross-discipline operations and sustainability.

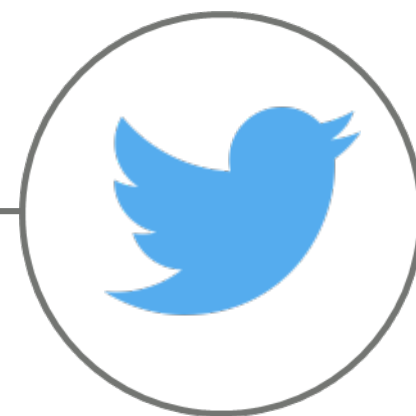


SCRA is helping to establish virtual connectivity between the Watt Center and other strategic locations throughout the state.





scra.org



[@SCRAInnovation](https://twitter.com/SCRAInnovation)



info@scra.org